

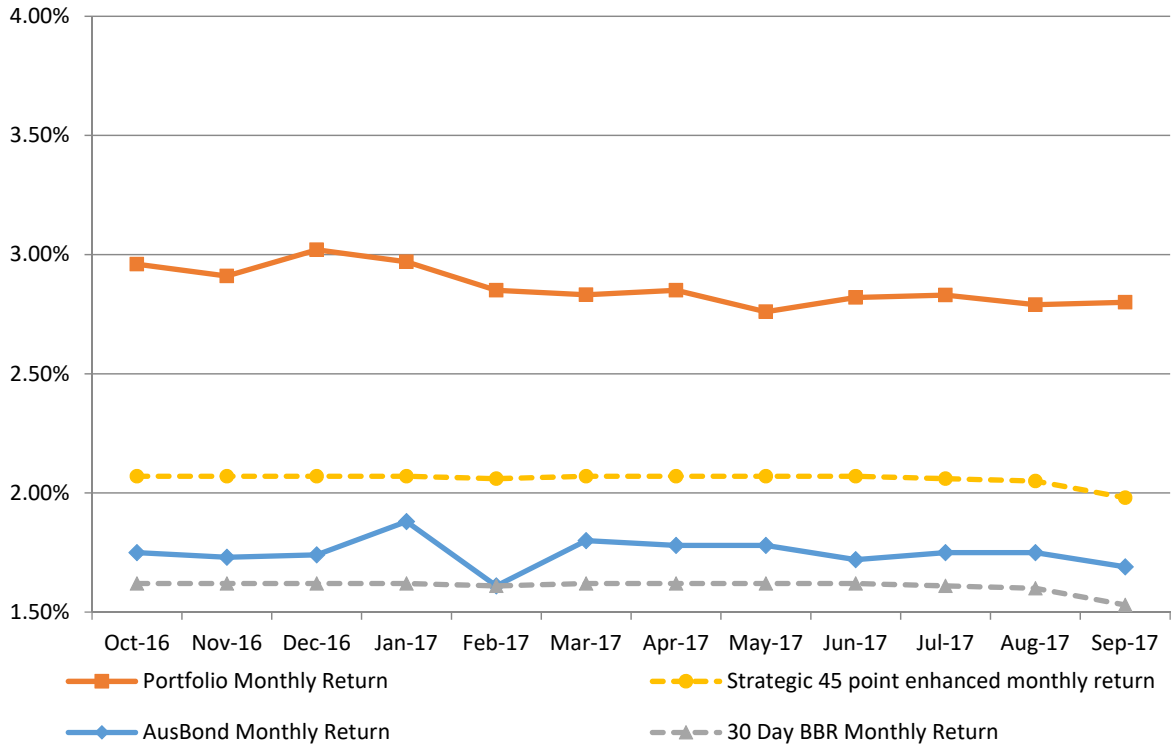
ATTACHMENT B

ATTACHMENT B

**INVESTMENT PERFORMANCE
AS AT 30 SEPTEMBER 2017**

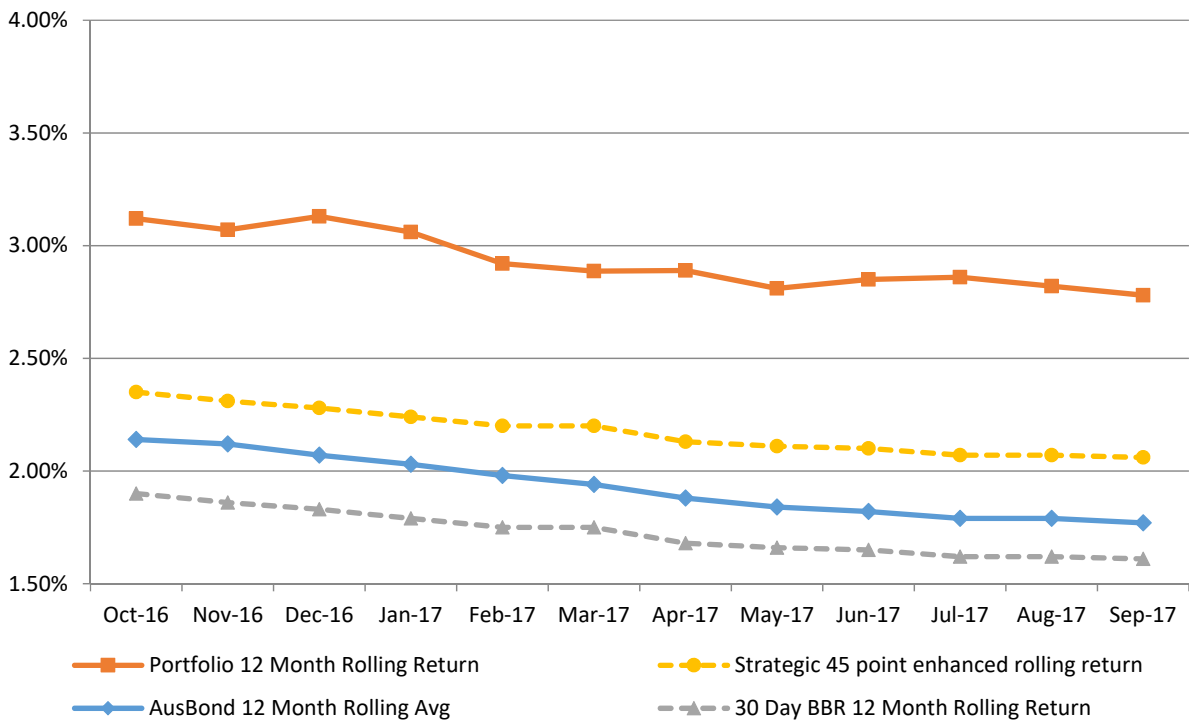
Monthly Results

**Actual Portfolio vs Strategic Enhanced Benchmark vs AusBond Benchmark vs 30 Day BBR Benchmark
September 2017**

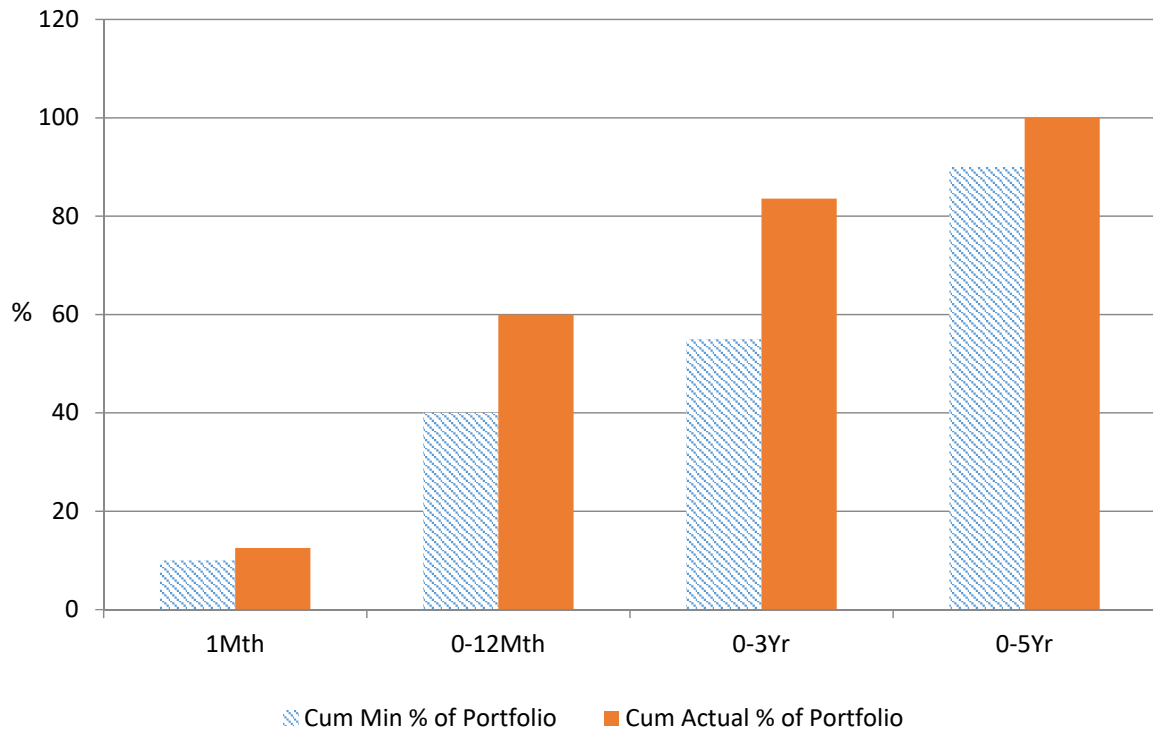


12 Month Rolling Averages

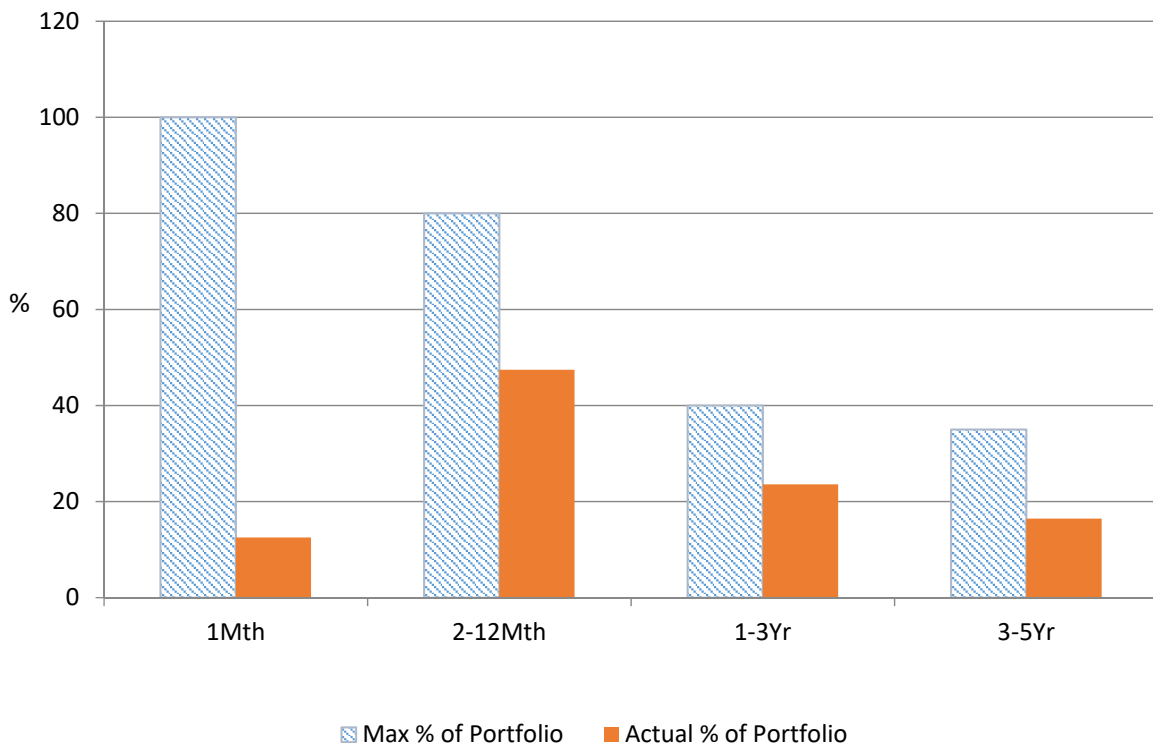
**Actual Portfolio vs Strategic Enhanced Benchmark vs AusBond Benchmark vs 30 Day BBR Benchmark
September 2017**



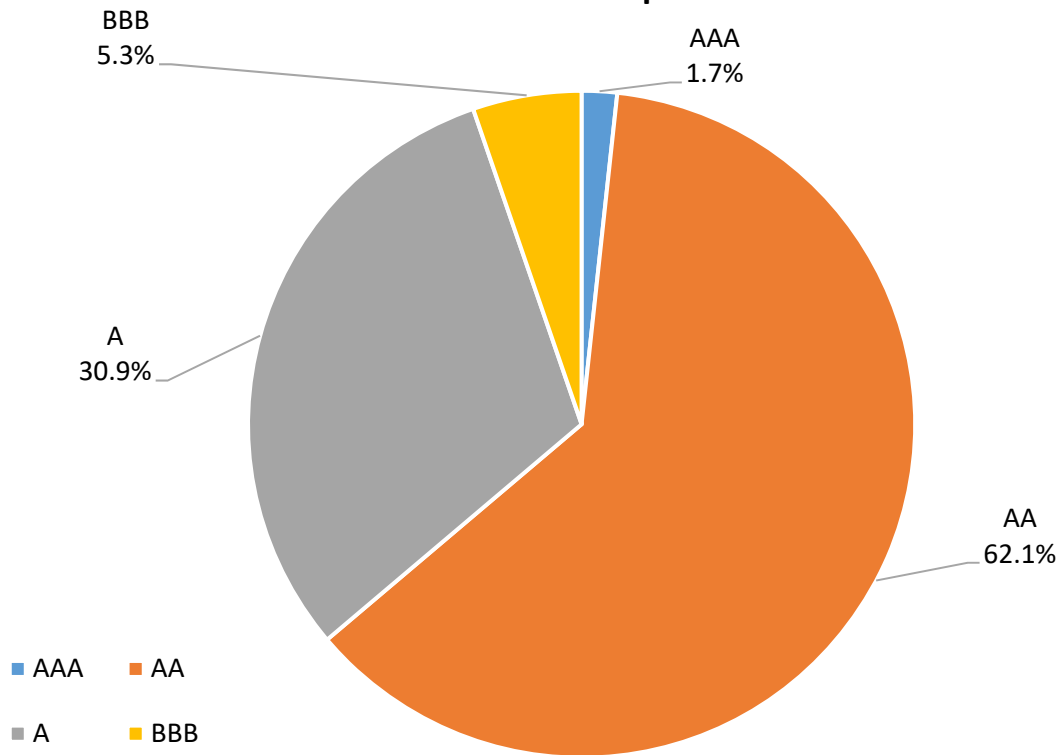
% Liquidity - Minimum Allocations



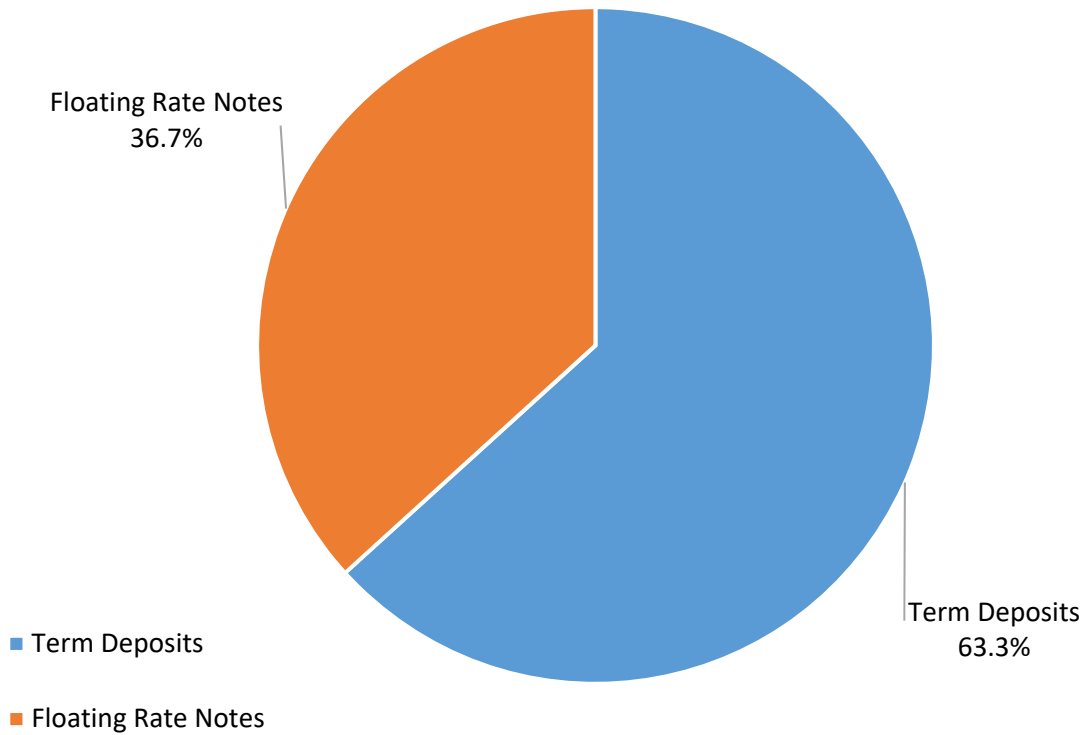
% Liquidity - Maximum Allowances



Risk Profile as at 30 September 2017



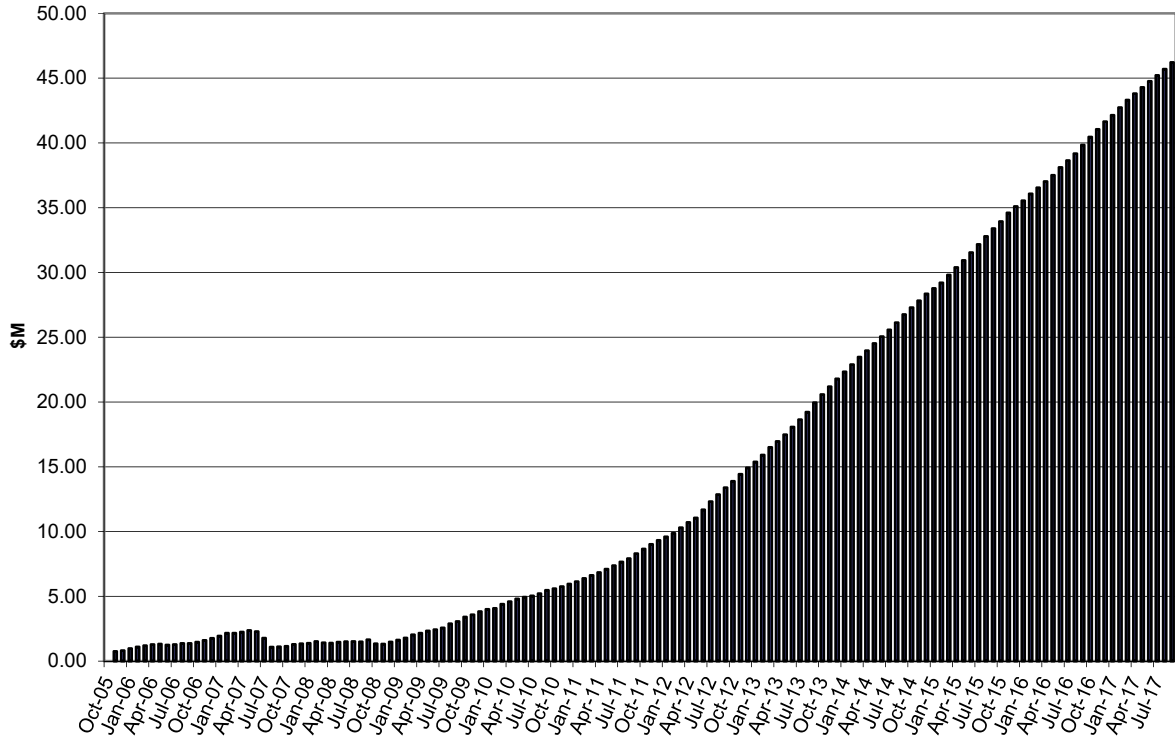
Investment Product Profile as at 30 September 2017



INVESTMENT AND CASH DISTRIBUTION BY FINANCIAL INSTITUTION
AS AT 30 SEPTEMBER 2017

Institution Category	Financial Institution	Amount \$M	Financial Inst. %	Institution Cat. %
Australian Big 4 Bank (and related institutions)	ANZ Bank	30.0	5.3	
	Commonwealth Bank-related:	113.6	20.1	
	<i>Bankwest</i>	25.0	4.4	
	<i>Commonwealth Bank</i>	88.6	15.7	
	National Australia Bank	70.0	12.4	
	Westpac Banking Corporation	133.4	23.7	
Big 4 Total		347.0		61.5
Other Australian ADIs and Australian subsidiaries of foreign institutions	AMP Bank Ltd	5.0	0.9	
	Bank of China-Sydney Branch	5.0	0.9	
	Bank Of Queensland	45.0	8.0	
	Bendigo and Adelaide Bank	26.0	4.6	
	CUA Limited	40.0	7.1	
	Greater Bank	5.0	0.9	
	IMB	10.0	1.8	
	Members Equity Bank	42.0	7.4	
	Newcastle Permanent Building Society	17.0	3.0	
	Royal Bank of Canada - Sydney	9.5	1.7	
	Suncorp Bank	12.5	2.2	
Other ADI Total		217.0		38.5
Grand Total		564.0	100.0	100.0

Cumulative Outperformance over AusBond Benchmark - 2005-2017



Cumulative Outperformance over 30 Day BBR Benchmark - 2005-2017

